



**JSCB**  
**Joint Schools Construction Board**



SYRACUSE CITY  
SCHOOL DISTRICT

Huntington School – January 19, 2017

# Huntington Pre-K-8 School

**Project Budget: \$22,500,000**

## ❖ Infrastructure

- Window replacement
- Pool improvements

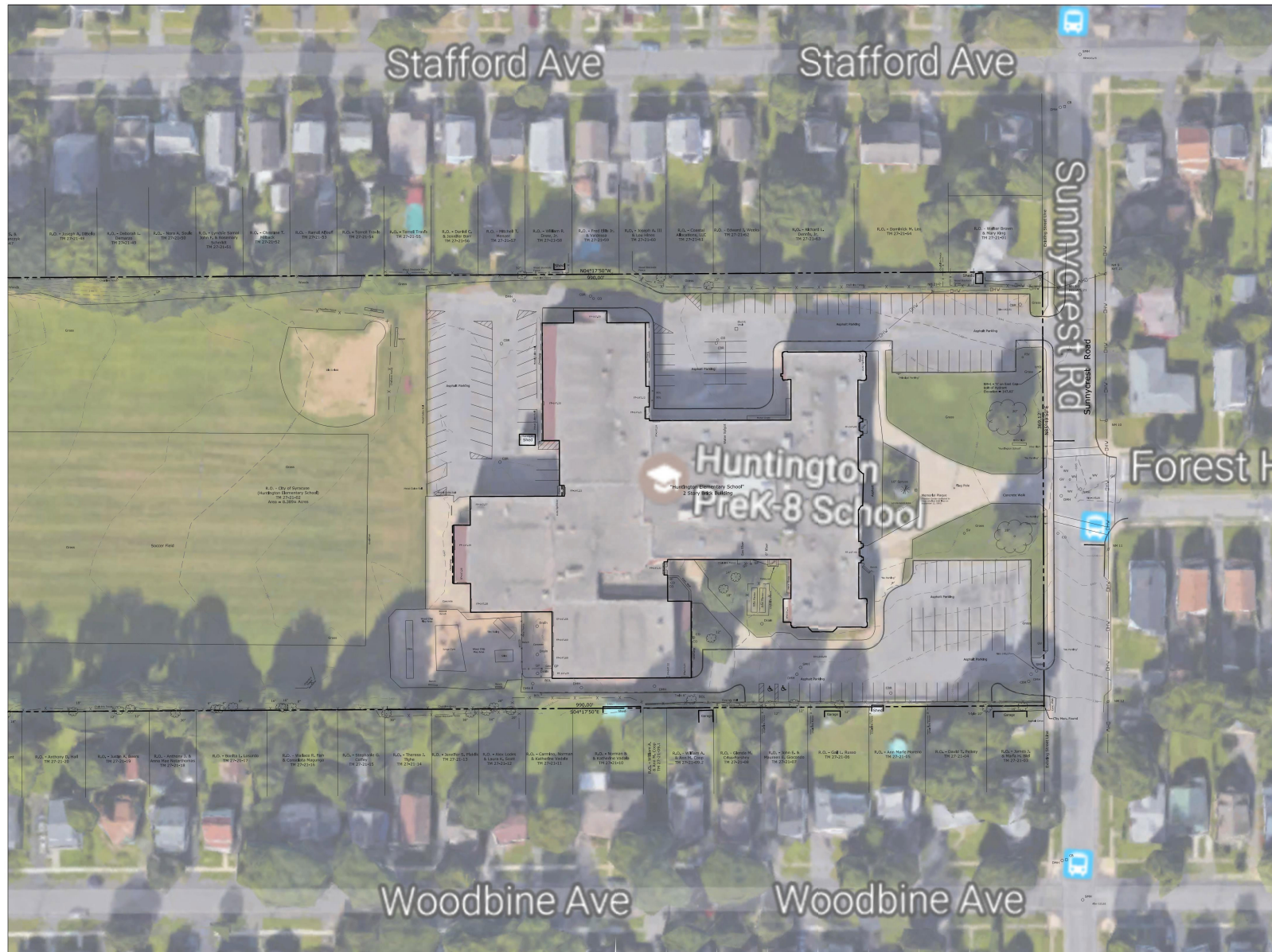
## ❖ Program

- Project Lead the Way Instructional space improvements

## ❖ Safety/Security/ADA

- Renovation to main office to create a secured single point entrance & Principal office suite
- Site work improvements
- ADA improvements – at grade entrances; elevator; door hardware changes; bathroom improvements
- Improvement to the basement classrooms
- Advanced Security and Technology systems



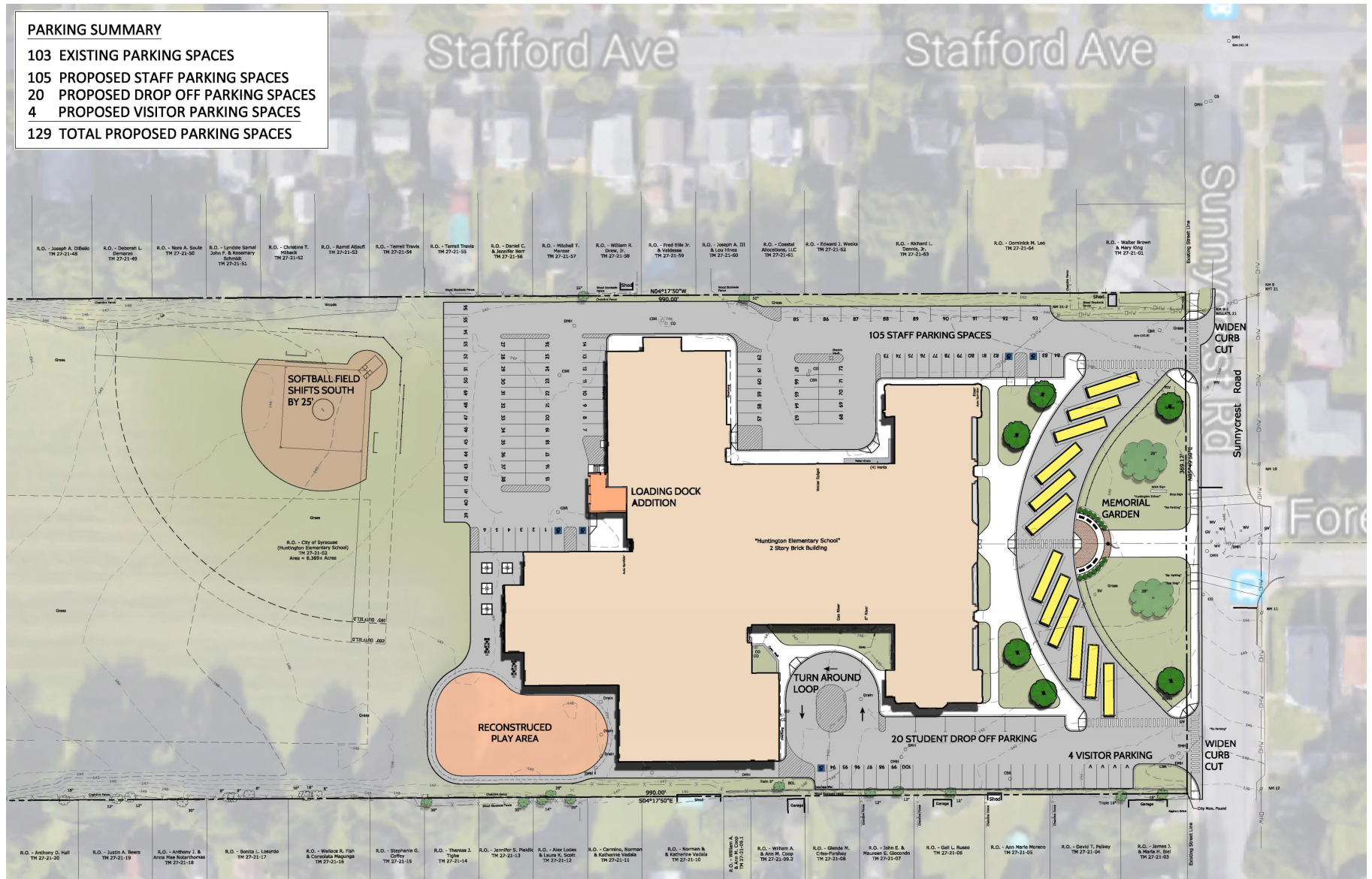


Existing Site Plan



# **PARKING SUMMARY**

- 103 EXISTING PARKING SPACES
- 105 PROPOSED STAFF PARKING SPACES
- 20 PROPOSED DROP OFF PARKING SPACES
- 4 PROPOSED VISITOR PARKING SPACES
- 129 TOTAL PROPOSED PARKING SPACES



Proposed Site Plan

### Pool and Locker room Upgrades

- New Interior Finishes
- H.C. Accessibility Improvements
- Pool mechanical upgrades

### Loading Dock

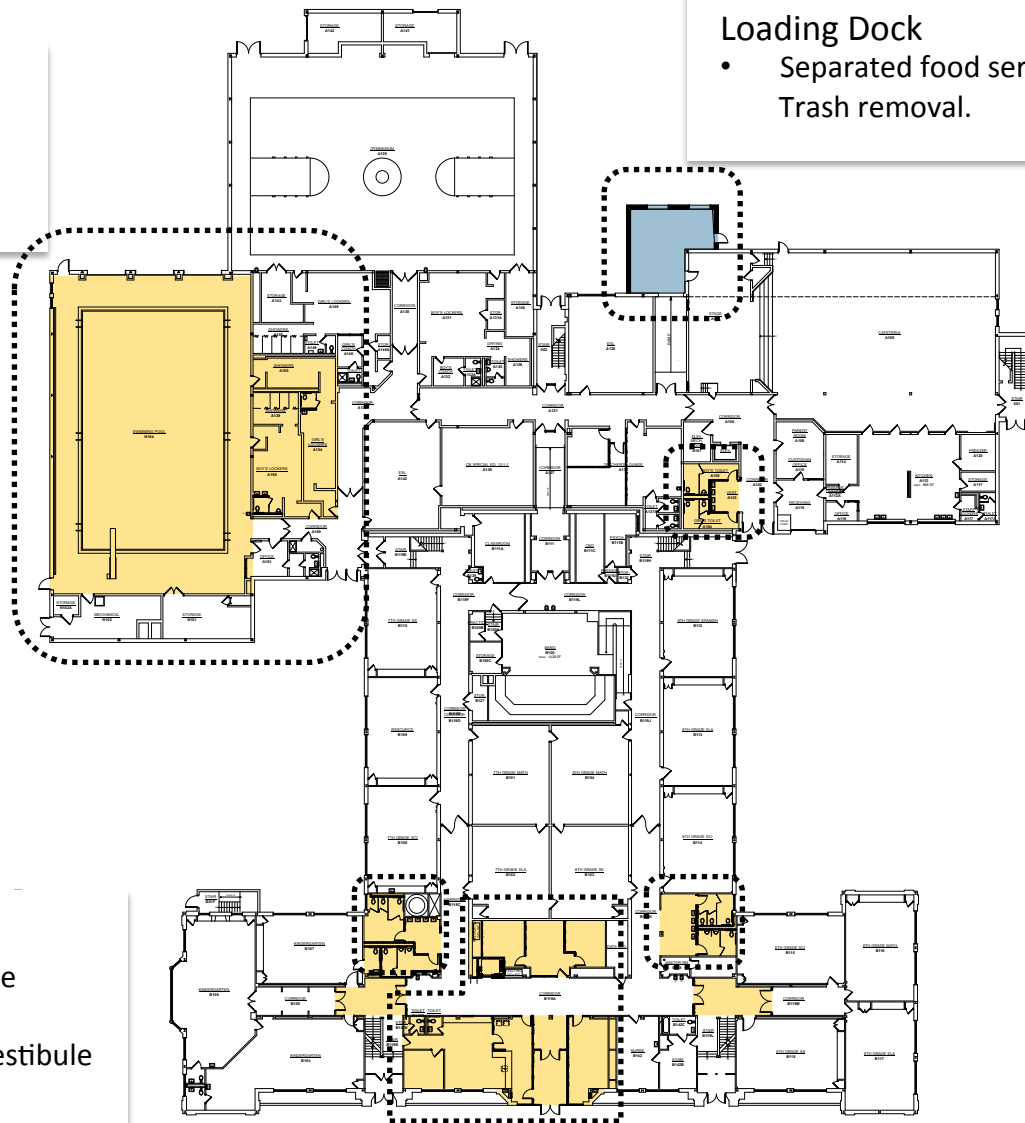
- Separated food service and Trash removal.

### Bathroom Upgrades

- New Interior Finishes
- H.C. Accessibility Improvements
- New Plumbing Fixtures

### Main Entrance Renovations

- Creation of Single Point/ Secure Entrance
- H.C. Accessible Main Entrance
- Main Office renovations with security vestibule
- New Elevator to Basement & 2<sup>nd</sup> Floor



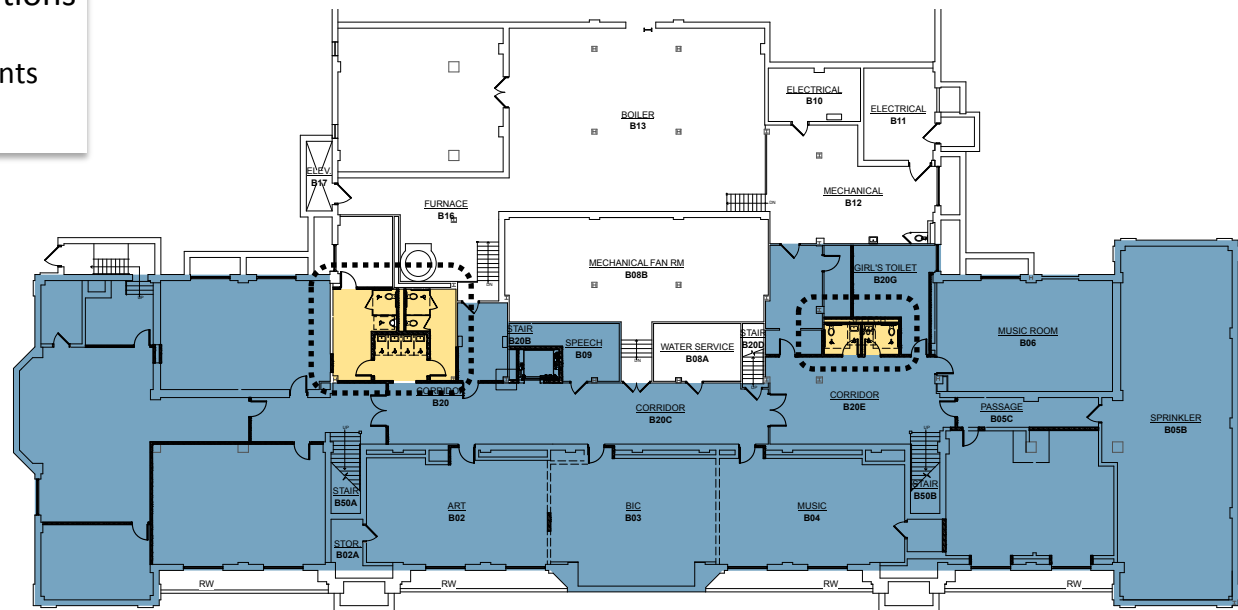
First Floor Plan

### Bathroom Upgrades

- New Interior Finishes
- H.C. Accessibility Improvements
- New Plumbing Fixtures

### Basement Classroom Renovations

- New Interior Finishes
- H.C. Accessibility Improvements



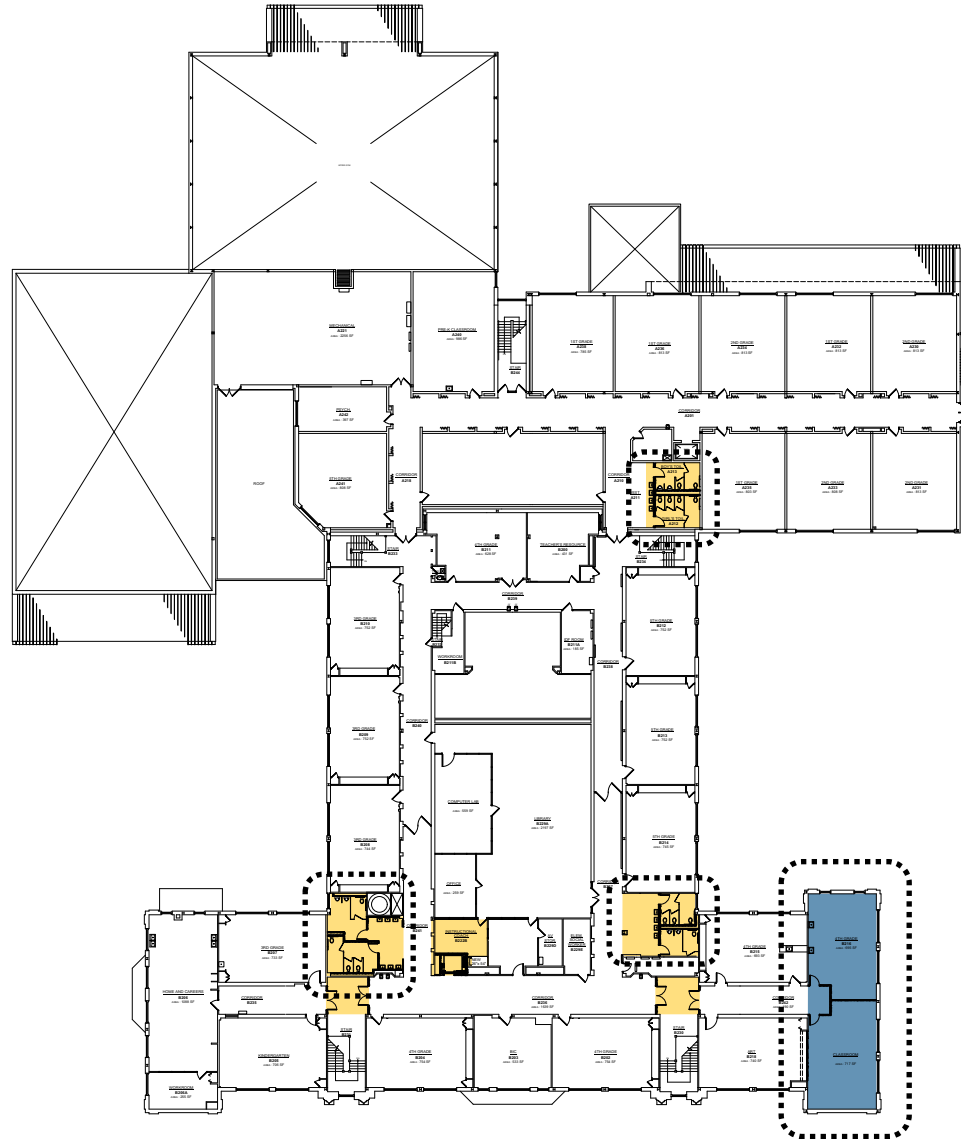
Basement Plan

### Bathroom Upgrades

- New Interior Finishes
- H.C. Accessibility Improvements
- New Plumbing Fixtures

### Classroom Renovations

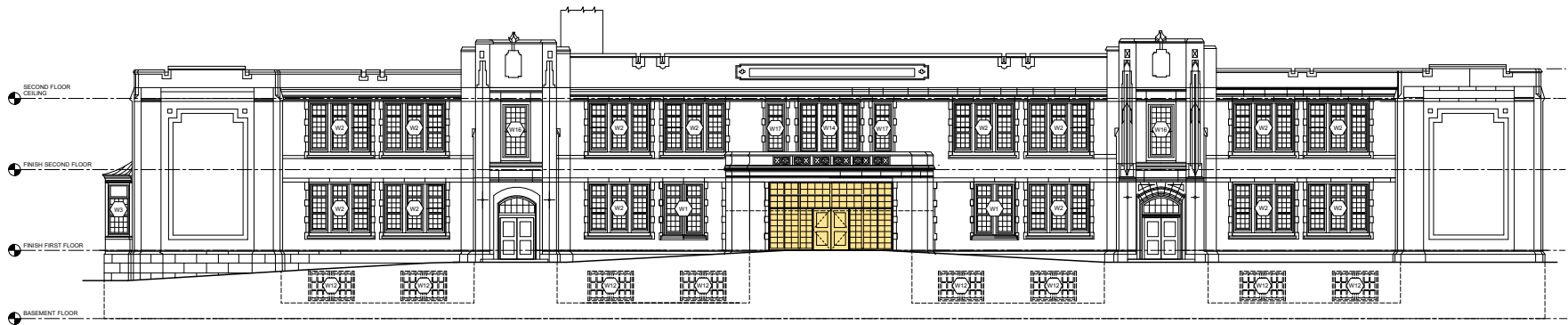
- New Interior Finishes
- H.C. Accessibility Improvements



Second Floor Plan

### Exterior Building Upgrades

- New Main Entrance
- Window Replacement
- Exterior Door Replacement



Exterior Elevation